



saubere Leistung

Nehlsen-Group  
Mai 2021

## Company presentation of Nehlsen AG

// HISTORY

## Nehlsen since 1923

**Over 90 years – Always one step ahead!**

Nehlsen - a company with tradition and future.

Already in the fourth generation Nehlsen is a progressive company, offering innovative services in the key business areas of resource and waste management, plant planning, building and operation.

**Our mission: We are taking responsibility for humans and the environment!**

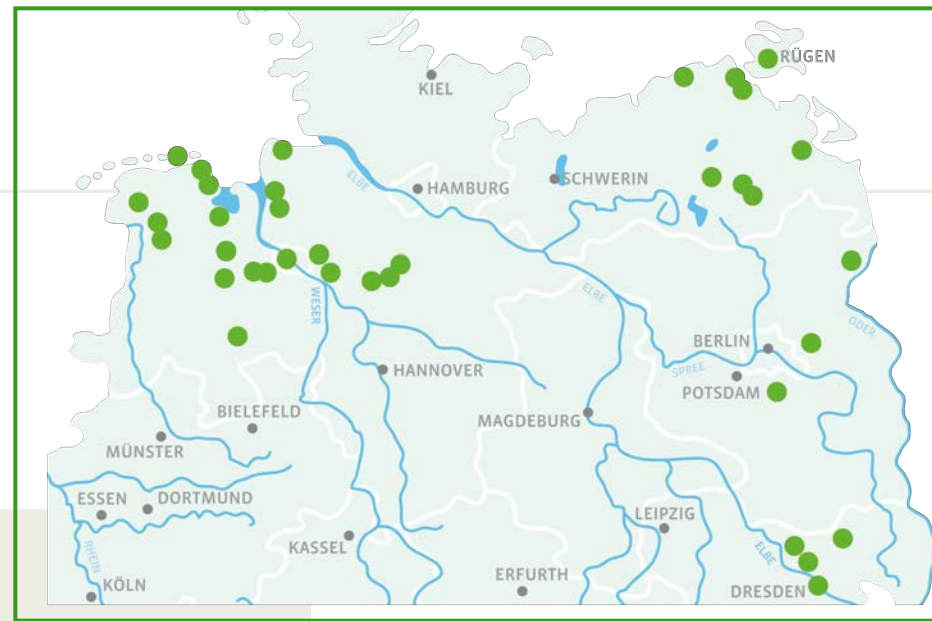




## // FACTS AND FIGURES

### Some facts about Nehlsen\*

- Founded 10. December 1923
- Turnover in 2019: 335 million €
- 39 subsidiaries ( and 15 holding companies)
- 67 locations in Germany
- 12 international locations in the Czech Republic, Romania, Poland, Angola, Netherland and the Slovak Republic
- ~ 2.200 employees in Germany
- ~ 2.600 employees worldwide
- About 17.000 containers and 600 vehicles in Germany



// PORTFOLIO  
**Our services**

applies to all areas:

- 24-hour emergency hotline
- project planning and consultancy

resource & waste management

container service, collection, treatment and recycling, also of hazardous waste, for

- households
- industrial and commercial customers
- Ports and ships
- events
- offshore platforms
- municipalities and cities

- plant operation
- destruction of files
- material flow management

cleaning services

- pest control
- winter service
- for public areas
- industrial cleaning & maintenance
- Cleaning and maintenance service of/for commercial areas
- special cleaning
- canal- & settling tank service

logistic

freight forwarding of:

- waste
- hazardous goods
- secondary raw materials
- construction material
- bulk freight

//ENABLE RECYCLING

## Nehlsen's treatment plants

Among others, those are our treatment plants:

- **Technical sorting plant for commercial waste**  
f.e. in Bremen with a performance of 100.000 t/a
- **Sorting plants for packaging waste**
- **Treatment of organic waste**  
f.e. processing more than 45.000 t/a organic waste of households and commercial operations of Bremen
- **Treatment facility for contaminated packagings (paints, lacquers, etc.)**



## European landfill ban

Potential solutions:

a) Incineration

b) MBT (Mechanical Biologic Treatment)

- **using parts for landfilling**  
after intensive composting, biologic parts of the sorting facility could be used to fill the landfill in the coming years
- **Energy**  
producing RDF to replace coal in a cement kiln or power station. Using the caloric value of the waste instead of sorting poor material
- **Metals**  
sorting of FE+NE-metals, instead of recycling them out of the incineration ash





## Nehlsen Refuse-Derived Fuel Plant (RDF-Plant)

Commissioning of the mechanical-biological treatment plant (MBT) on the 1<sup>st</sup> of July 2005

2006: the MBT is leased to Nehlsen by SEG (Nehlsen is now its operator)

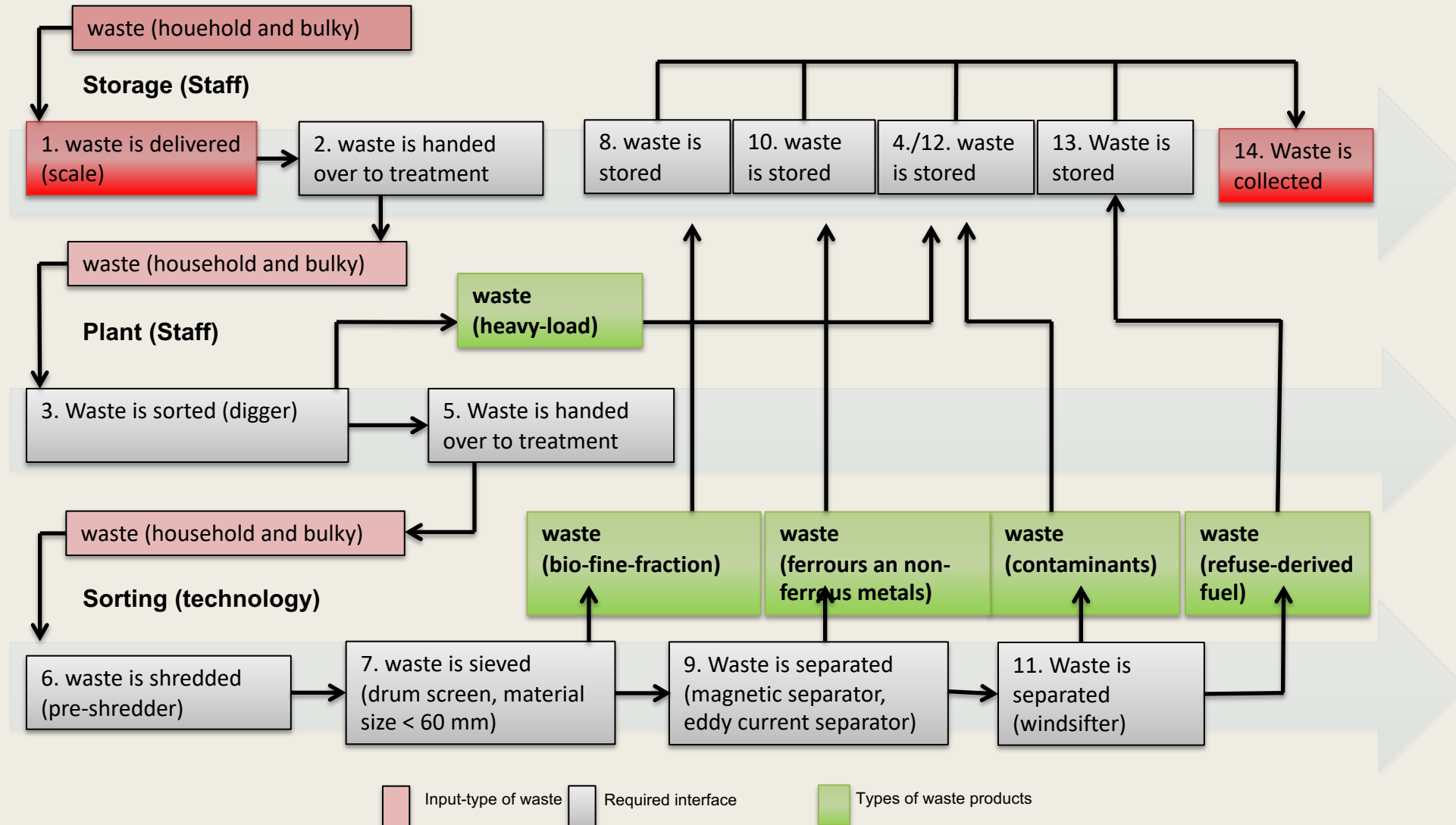
2009: Decommissioning of the biological treatment process

End of 2012: the MBT is sold to the Ostmecklenburgisch Vorpommersche Verwertungs- und Deponie GmbH (Nehlsen remains the operator of the plant)

To this day, household waste, commercial waste with a composition similar to that of household waste as well as bulky waste (combined roughly 65.000 t/year) is treated mechanically to reduce the amount of material being send to landfill by turning the waste info refuse-derived fuel for power generation.

Additionally, iron and non-ferrous metals are sorted at the facility.

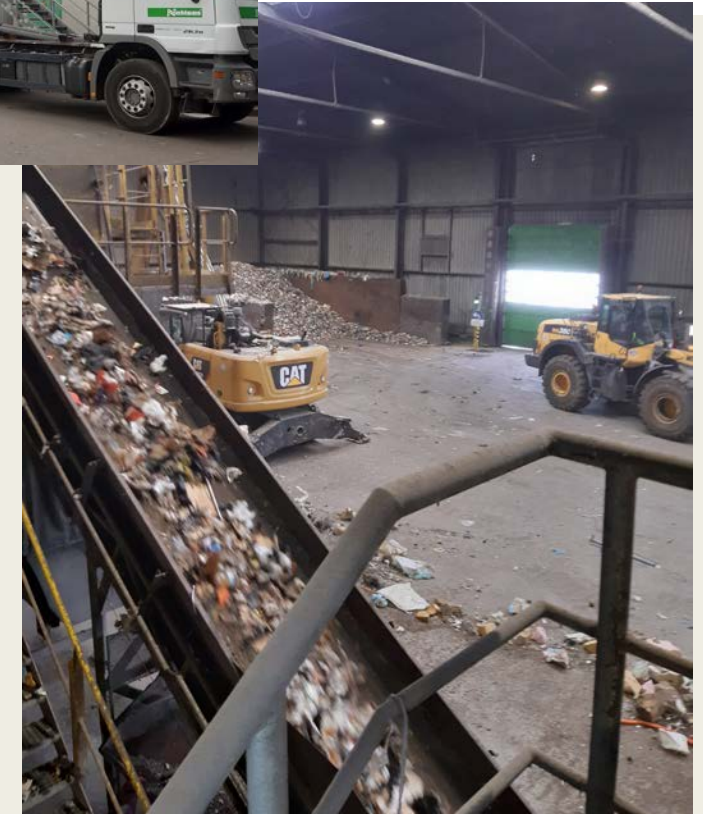






## Nehlsen Refuse-Derived Fuel Plant (RDF-Plant)

Manufacturing cost:	55 Euro/to	
Input volume:	35.000 to/anno	
Output Bio-fine-fraction	14.000 to costs	30 - 50 €/to
Output RDF (cement industry)	17.500 to costs	50 - 60 €/to
Output ferrous	900 to refund	70,00 - 120,00 €/to
Output non ferrous metals	100 to refund	300,00 €/to
total costs:	77 – 90,5 Euro/to (incineration: > 110 Euro)	



// COMPANY PRESENTATION

**Thank you for your attention**